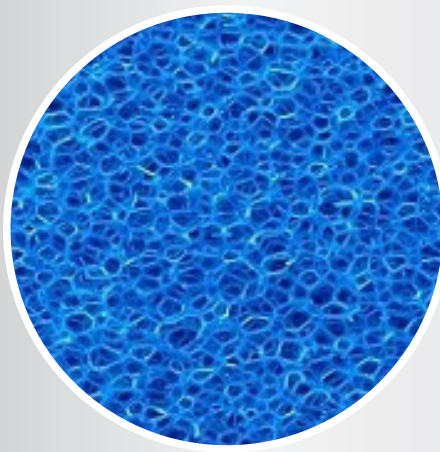


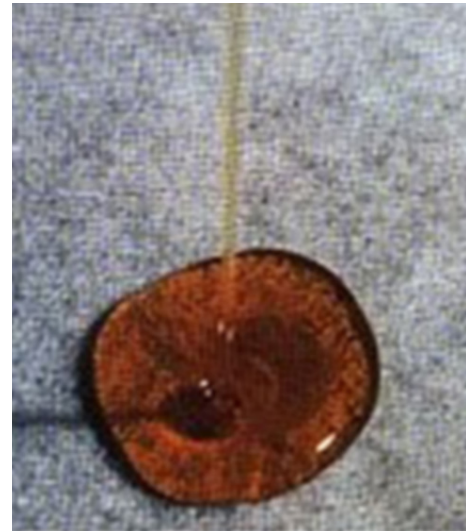
FELTS & FILTERS

- non woven / needle punched felt
- ester-based PU filter foam
- ether-based PU filter foam



NON-WOVEN/NEEDLE PUNCHED FELT

- polyester/polypropylene/flame-retardant fibre of non-woven/needle punched felt
- anti-bacterial, anti-mildew and anti-fungal features
- lamination with various foams
- suitable for thermoforming
- oil and water repellence
- meets FMVSS 302 automotive standard
- supplied in rolls, sheets, strips, die-cut and continuous kiss-cut forms with or without self-adhesive
- ideal for use in vibration damping, noise and heat insulation applications in vehicles such as interior trim, boot liner and boot floor covering, head liners, engine insulator, door panel liners, etc
- insulating cover of washing machine drums
- there is also a wide range of applications in the furniture and shoe industry, home textiles, bags and suitcases
- standard colours: black, grey and white, other colours available on request



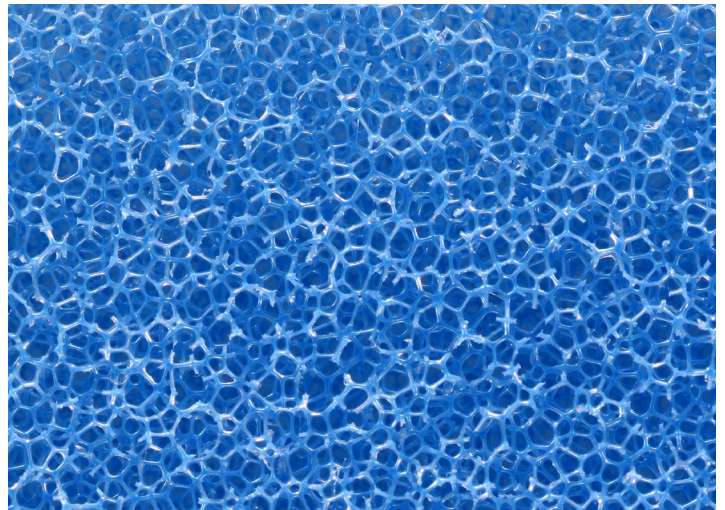
ETHER-BASED PU FILTER FOAM

- reticulated flexible polyether-based PU filter foam
- 18-40 kg/m³ density
- available in 10 PPI, 20 PPI, 30 PPI, 45 PPI, 60 PPI, 80 PPI and 100 PPI (PPI: pores per inch)
- die-cutting also possible depending on the required dimensions
- anti-bacterial, anti-mildew and anti-fungal features, prevents the growth of all these
- re-usable after washing and cleaning
- ideal for use especially in water filtration systems in aquariums, pools and water tanks, etc.



ESTER-BASED PU FILTER FOAM

- reticulated flexible polyester-based PU filter foam
- 18-40 kg/m³ density
- homogenised and more controlled cells/pores
- excellent resistance to solvents and temperature
- available in 10 PPI, 20 PPI, 30 PPI, 45 PPI, 60 PPI, 80 PPI and 100 PPI (PPI: pores per inch)
- die-cutting also possible depending on the required dimensions
- ideal for use in air and dust filtering applications in HVAC (Heating-Ventilation-Air Conditioning), power generators, vacuum cleaners, etc.



certified according to
ISO 9001:2008
ISO/TS 16949:2009

SSA Europe GmbH
Technical adhesive tapes



SSA EUROPE GMBH

Mölbling-Gewerbestraße 1
9330 Mölbling
Austria
T +43 (0)4262 4622-0
F +43 (0)4262 4622-22
office@ssa-company.com
www.ssa-company.com



SSA PANA Foamtec d.o.o

Sunce BR. 6
24300 Backa Topola
Serbia
T +381 (0)244 15 0516
F +381 (0)244 15 0517
office@ssapanafoamtec.com
www.ssapanafoamtec.com



PANA Foamtec GmbH

part of the company group
Bunsenweg 4-6
82538 Geretsried
Germany
T +49 (0)8171 93 41-0
F +49 (0)8171 93 41-99
info@panacell.de
www.panacell.de

